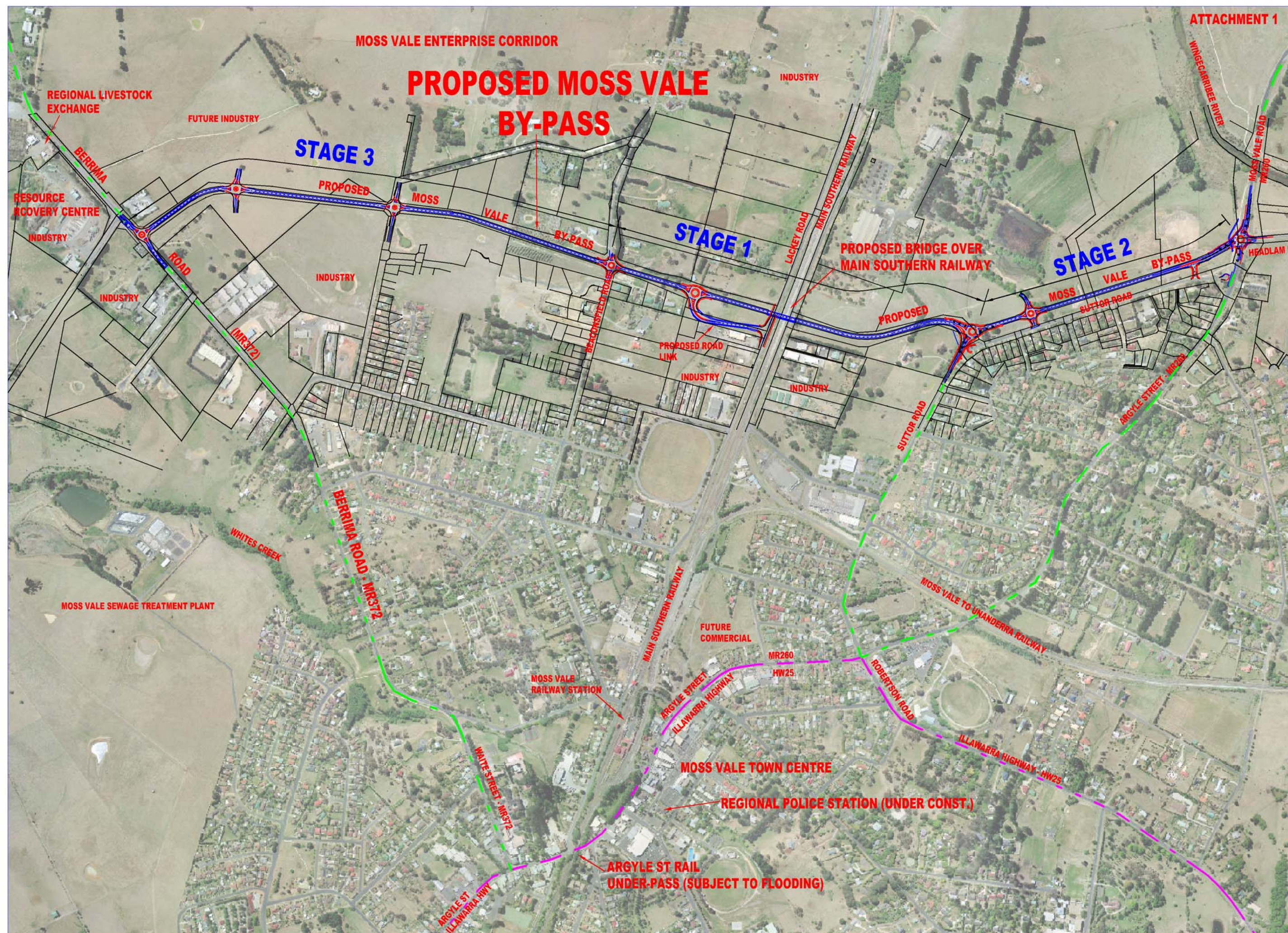
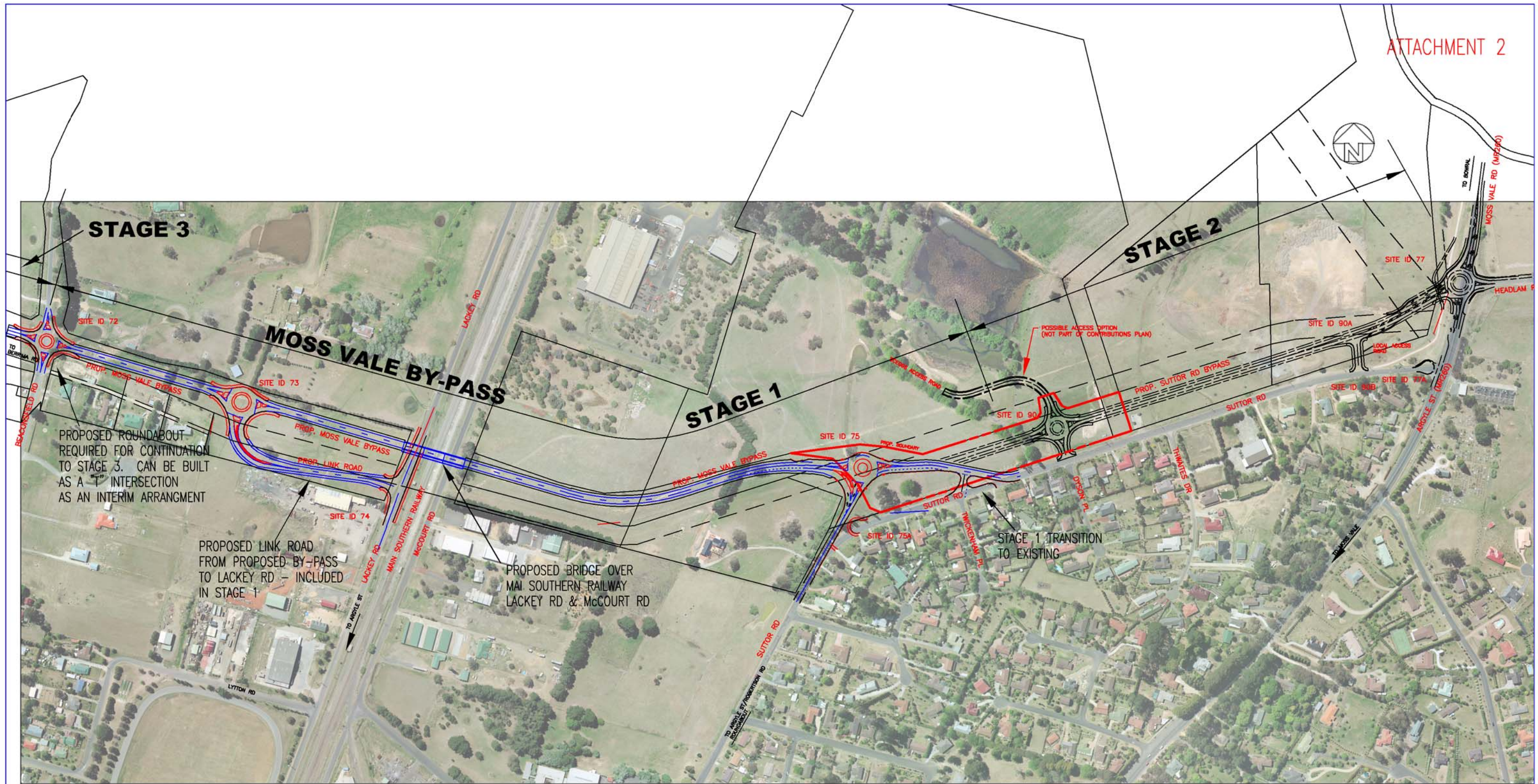



**PROPOSED MOSS VALE BY-PASS**

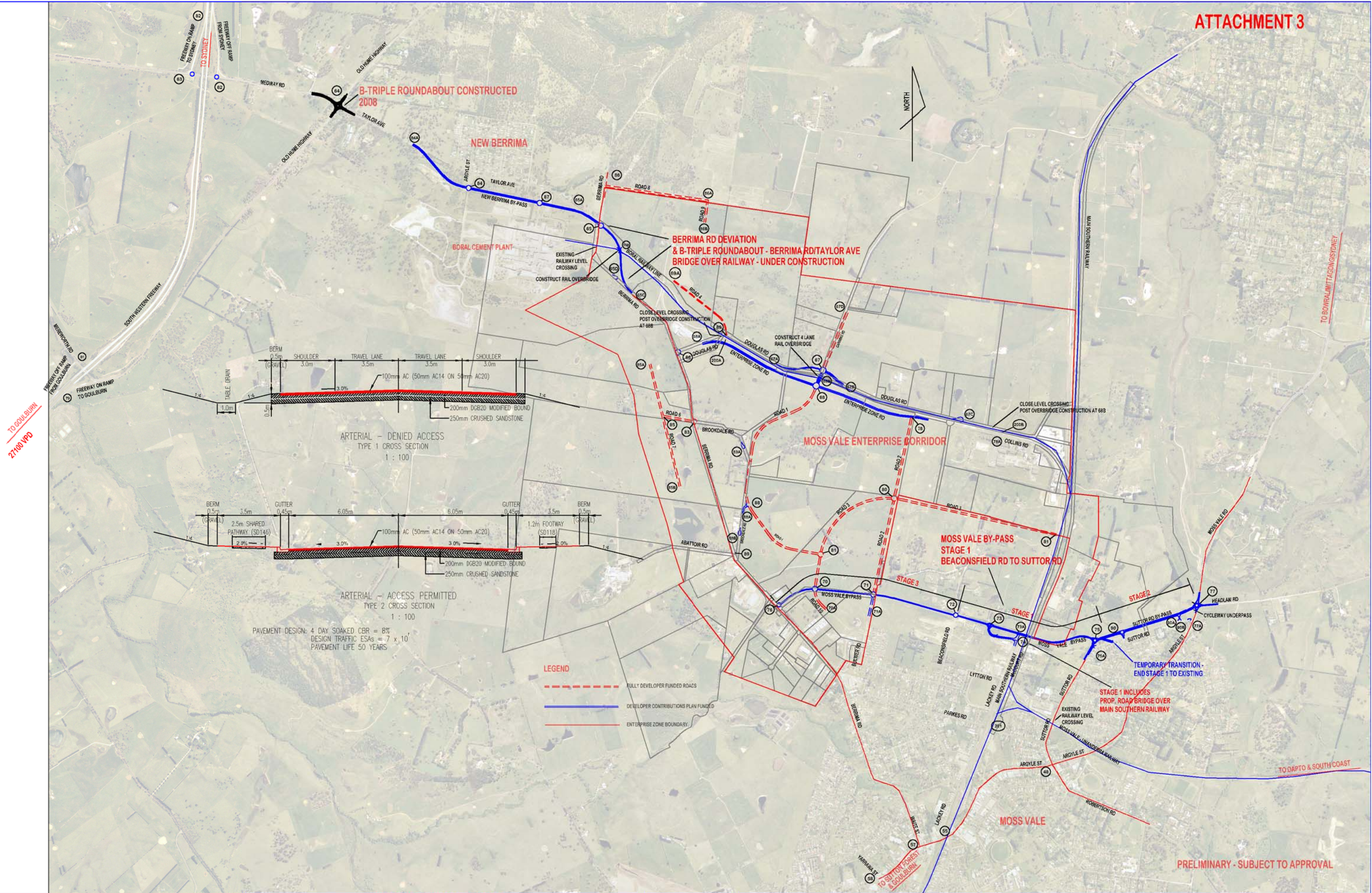






				PUBLIC UTILITIES LEGEND								APPROVED		 <small>Chic Centre, Elizabeth Street, Moss Vale, N.S.W. 2577 PO Box 141, Moss Vale, N.S.W. 2577 Ph: (02) 4668 0868 Fax: (02) 4669 1203</small>	WINGECARRIBEE SHIRE COUNCIL		SHEET		
B ALTERNATIVE ROUNDABOUTS – SITE ID'S 75 & 75A				11–5–11		WATER –W		SEWER –S		ELECTRICITY –E		TELEPHONE –T			SURVEYED . . .GIS		1		
A FOR CONSTRUCTION						RECYCLED WATER –RW		MANHOLE		ELECTRICITY PIT		TELEPHONE PIT			DESIGNED . . .F.IACONO		OF		
ISSUE AMENDMENTS				CHECKED	APPROVED	DATE	WATER		LAMPPOLE		POWER POLE		TELEPHONE PILLAR		DRAWN . . .F.IACONO		6		
SCALES						DATUM	HYDRANT		GAS		POWER LIGHT POLE		TELEPHONE POLE		CHECKED . . .				
						AHD	STOP VALVE		GAS VALVE		LIGHT POLE		TELEPHONE BOX						
						GRID	AIR VALVE		GAS METER		STAY POLE		TELEPHONE CABLE MARKER						
1:2500						A1	WATER METER				POLE & TRANSFORMER								
							WATER TAP				ELECT TRANSFORMER CABINET								





TO GOULBURN  
27000 IPD

TO BOYRALWITTAGONGSYDNEY

TO DAPTO & SOUTH COAST

PRELIMINARY - SUBJECT TO APPROVAL

PUBLIC UTILITIES LEGEND

WATER	—W—	SEWER	—S—	ELECTRICITY	—P—	ELECT TRANSFORMER CABINET	☐
RECYCLED WATER	—RW—	MANHOLE	⊗	UNDERGROUND ELECTRICITY	—UP—	TELEPHONE	—T—
		LAMPHOLE	⊙	ELECTRICITY PIT	⊖	TELEPHONE PIT	⊖
HYDRANT	□	GAS	—G—	POWER POLE	⊖	TELEPHONE PILLAR	⊖
STOP VALVE	▲	GAS VALVE	⊗	POWER LIGHT POLE	⊖	TELEPHONE POLE	⊖
AIR VALVE	△	GAS METER	⊗	LIGHT POLE	⊖	TELEPHONE BOX	⊖
WATER METER	⊗			STAY POLE	⊖	TELEPHONE CABLE MARKER	⊖
WATER TAP	○			POLE & TRANSFORMER	⊖		

SURVEYED	..AERIAL..
DESIGNED	..F.JACO..
DRAWN	..F.JACO..
CHECKED	.....
DATE	.....

APPROVED
MANAGER - DESIGN & PROJECTS
NOTED BY CLIENT
.....
.....

WINGECARRIBEE SHIRE COUNCIL

Chic Centre, Elizabeth Street, Moss Vale, N.S.W. 2577  
PO Box 141, Moss Vale, N.S.W. 2577  
Ph: (02) 4668 0808 Fax: (02) 4668 1203

WINGECARRIBEE SHIRE COUNCIL	
MOSS VALE ENTERPRISE CORRIDOR	
PROPOSED ROAD INFRASTRUCTURE PLAN	
ULTIMATE NETWORK POST 2031	
PRECINCT CONCEPT PLAN	
JOB No:	1-10975
CAD FILE/PLAN No:	2080-OALL

SHEET	2
OF	2
ISSUE	A



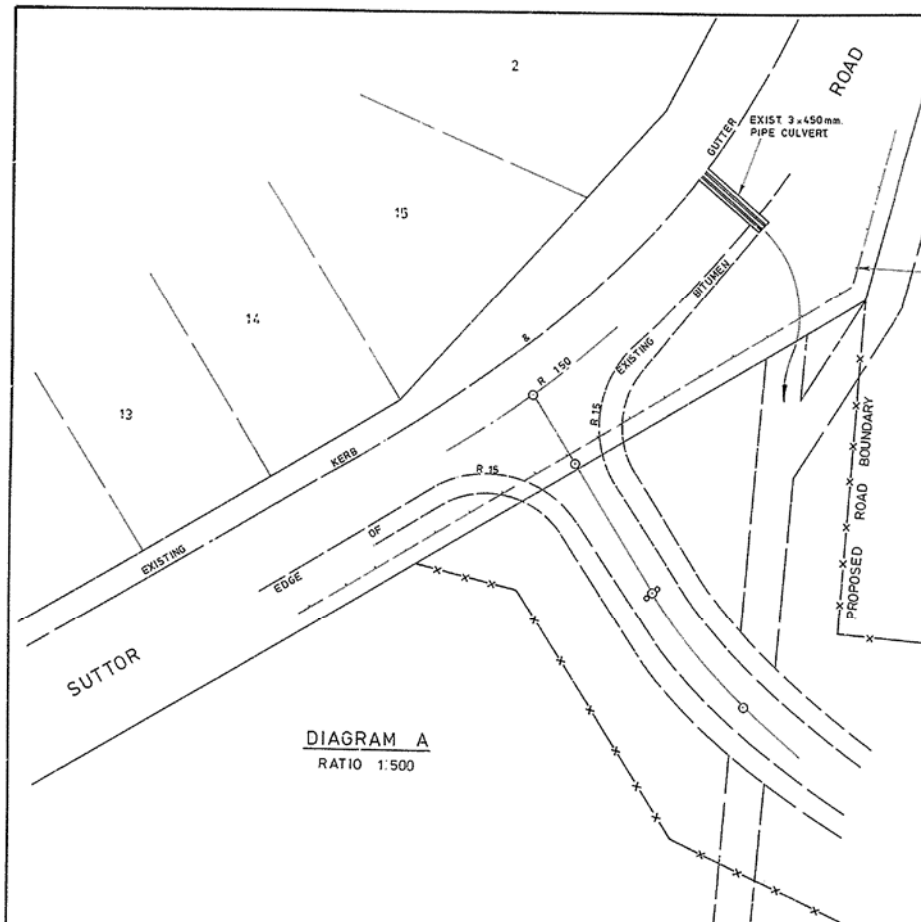


DIAGRAM A  
RATIO 1:500

DIAGRAM B  
RATIO 1:500

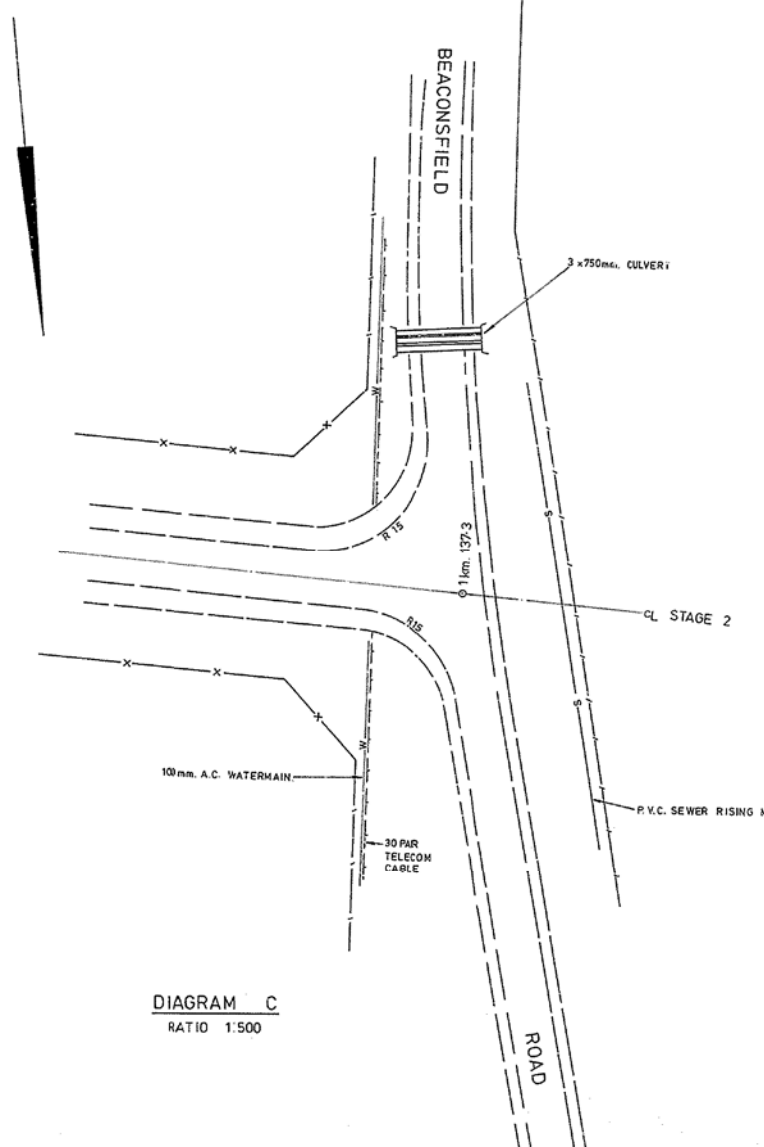
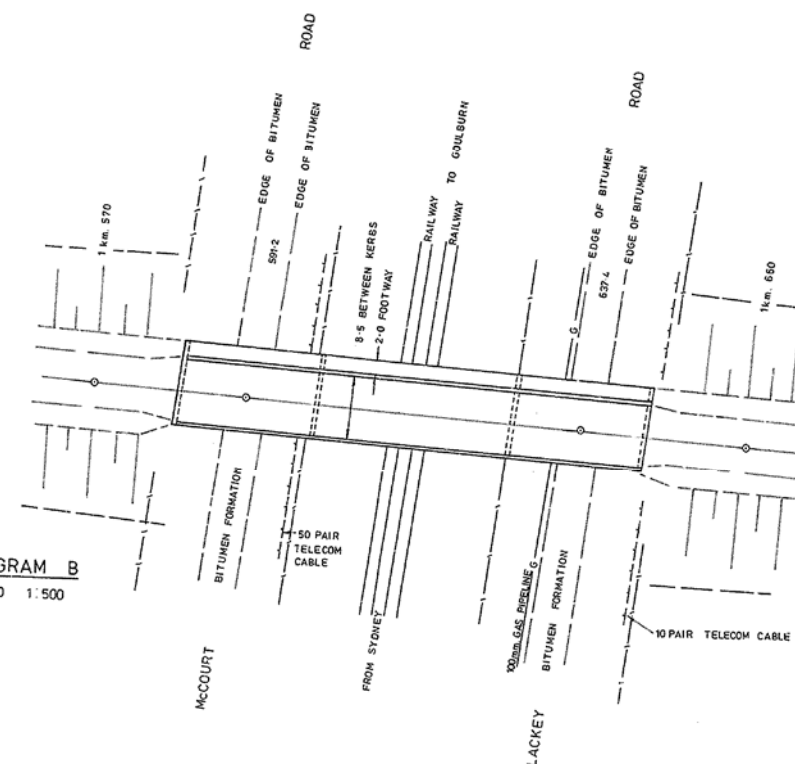
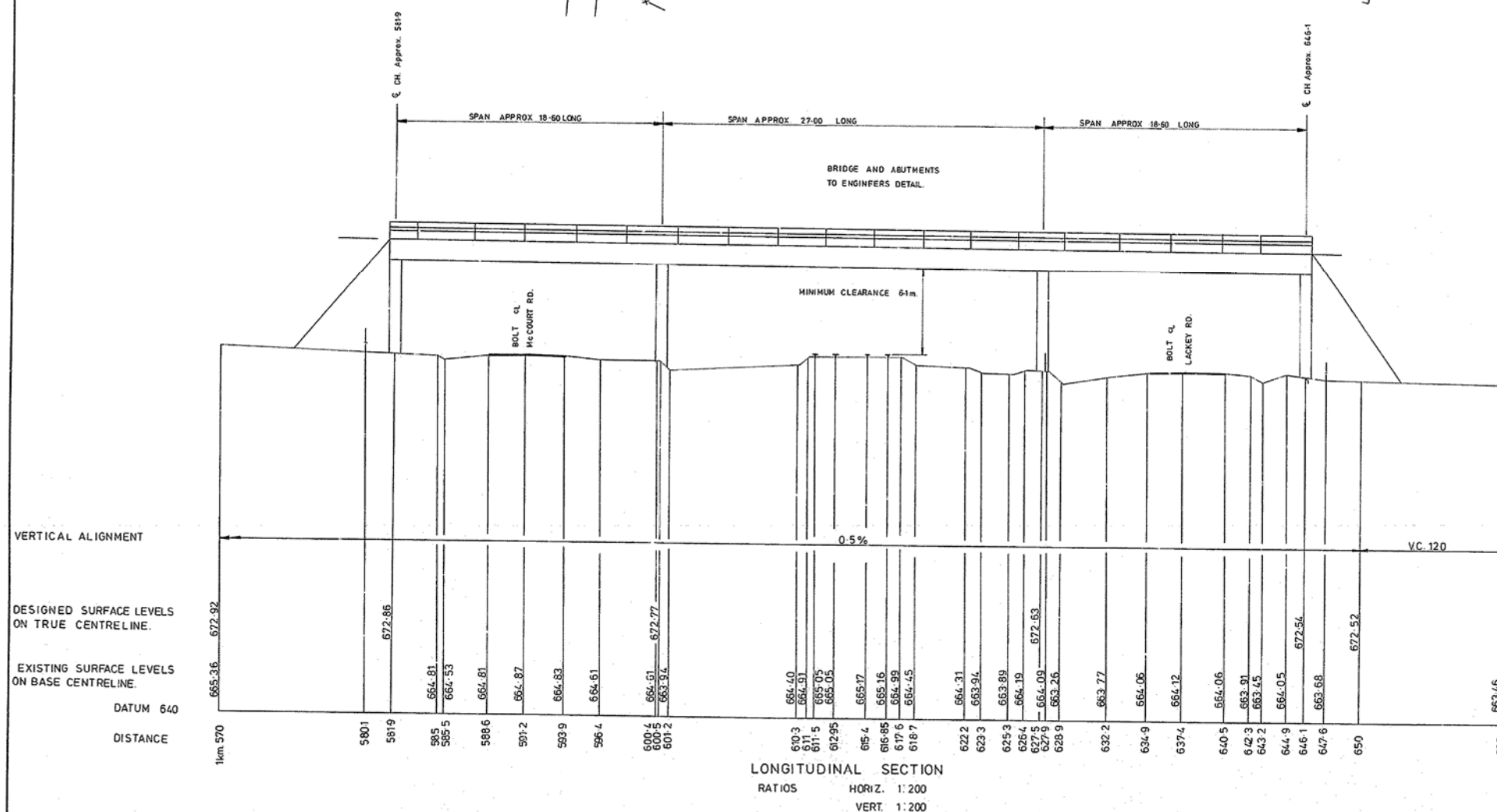


DIAGRAM C  
RATIO 1:500



RATIOS				AS				SHOWN			
Design Speed				80km./h.				Work as Executed Certificate			
Pavement Width				7.4				These drawings have been taken to the site of the work and compared with the situation and are recommended.			
Formation Width				13.4				Shire Engineer: <i>Alfred</i>			
Pavement Depth				300mm.				Date: 21.10.82			
* Adopted for design purposes only.								SHIRE OF WINGECARRIBEE			
								MOSS VALE NORTHERN BY-PASS			
								00km. to 1km. 137.3 from Suttor Rd.			
								D.M.R. Reference			
								N° of Sheets			
								6			
								Sheet N°			
								2			
								Drawing N°			
								941			